



氣候變遷

Climate Change

by: Misa. Vina. Vita. Deborah. Shiny. Phoebe. Eva. Jacob





Agenda

1. What is Climate change

2. Problems caused by Climate change

3. What is Global warming?

4. What will happened in our hometown

5. Conclusion



What is Climate Change?

Climate change is a long-term change in the average weather patterns that have come to define Earth's local, regional and global climates.



The impact of Climate Change

(1) The melting of polar ice sheets has caused sea levels to rise. (2) Global climate change has led to abnormal heavy rains and droughts, impacting water and soil resources. (3) the ecological system is changing, impacting the global living environment.



What is the greenhouse effect?

溫室效應是指大氣層因為吸收輻射能量，使得行星表面升溫的效應。

The greenhouse effect refers to the effect that the planet's atmosphere heats up the planet's surface by absorbing radiant energy.



全球暖化是什麼

what is global warming?

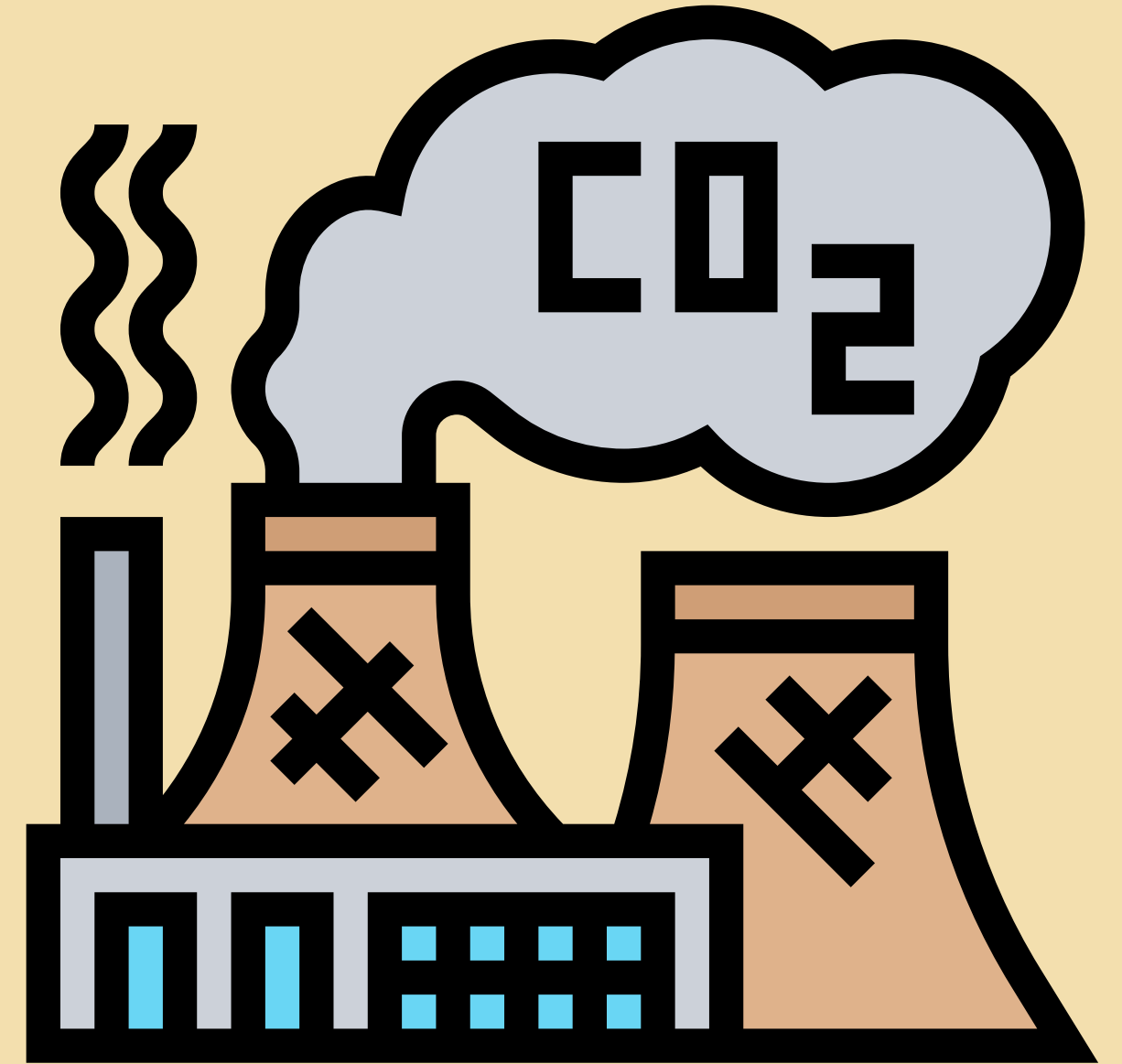
地球表面的大氣與海洋因溫室效應而造成全球平均溫度上升的現象。

The atmosphere and oceans on the earth's surface cause the global average temperature to rise due to the greenhouse effect.



因為我們一直浪費地球資源
一直排放二氧化碳
造成地球暖化

Because we have been wasting
the earth's resources and
emitting carbon dioxide, causing
global warming.

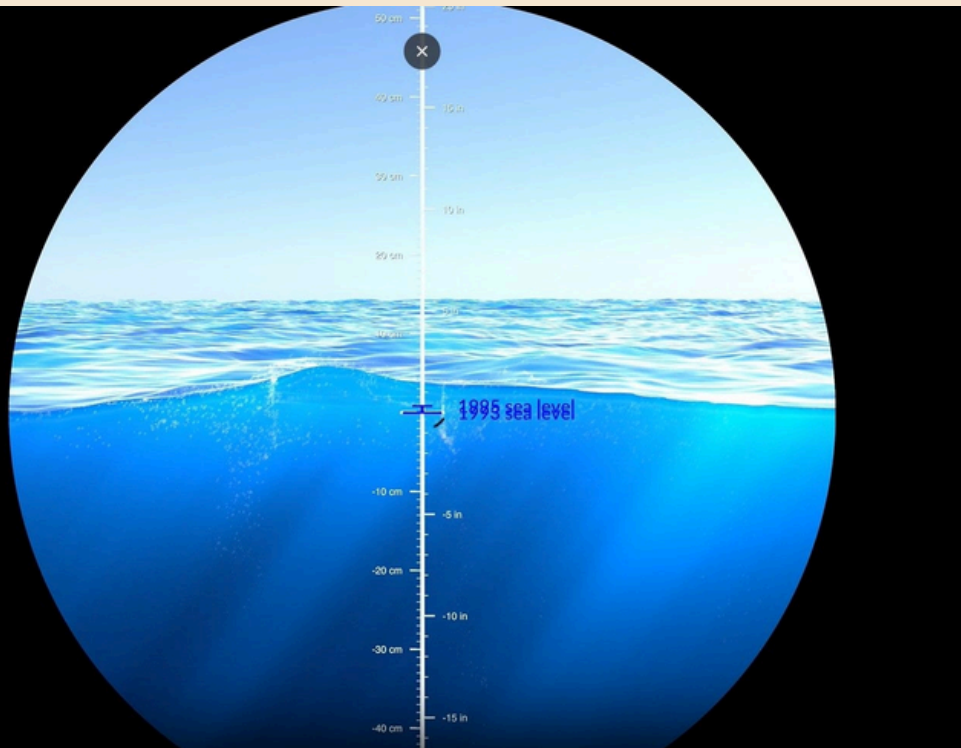


過去一世紀中，破壞自然資源和工業發展，造成大氣中的二氧化碳濃度增加，使溫室氣體濃度越來越高，引致全球暖化。

當平均氣溫和海洋溫度升高，使冰川也會加速融化，導致海平面上升，淹沒沿海低海拔地區。

Over the past century, the destruction of natural resources and industrial development have caused an increase in the concentration of carbon dioxide in the atmosphere, making the concentration of greenhouse gases higher and higher, causing global warming.

As average air and ocean temperatures rise, glaciers will melt faster, causing sea levels to rise and flood low-elevation areas along the



Don't cut down trees arbitrarily

1. Turning off lights

How can we do for earth

Replace taxis and private cars with public transportation. Using mass transportation can save more than 5 kilograms of carbon emissions.

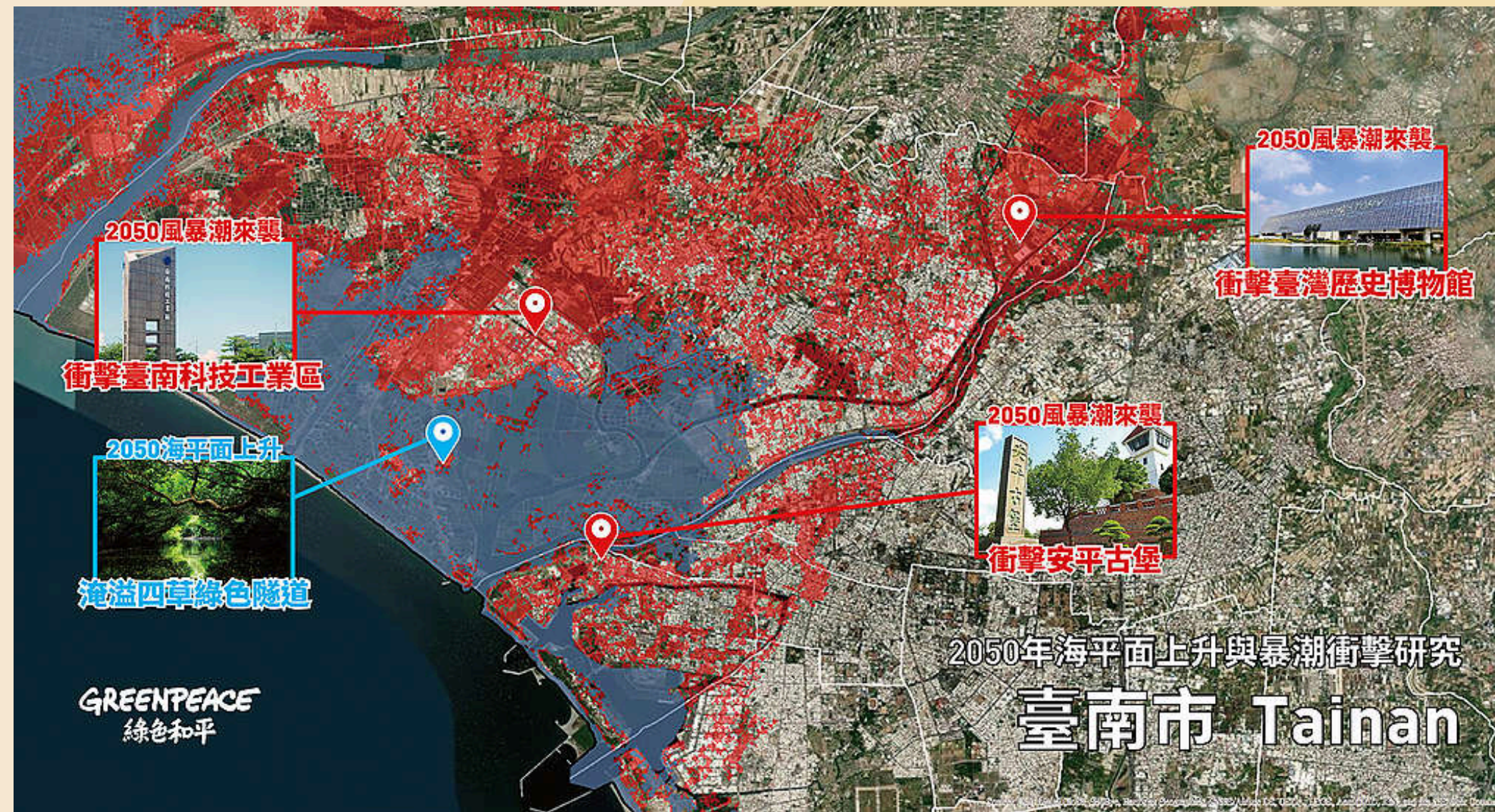
Replace personal transportation with public transportation or bicycles.

Reduce the air-conditioning, drive more and walk more

Use less plastic products

臺南市古蹟達18座，很多古蹟同樣也可能會被海平面上升與暴潮所淹溢。淹溢的土地面積共約841.98萬平方公里，超過206萬人的居住安全將受到海平面與風暴潮的威脅。

Tainan City has 18 monuments, many of which may also be flooded by rising sea levels and storm surges. The flooded land area totals approximately 8.4198 million square kilometers, and the residential safety of more than 2.06 million people will be threatened by sea levels and storm surges.



What will happen in Anping?

- 1.our house will be flooded**
- 2.no place to stay**
- 3.The plants will dry up and there will be no food to eat**
- 4.If sea levels rise, many ancient monuments will be submerged**
- 5.Cram schools will be flooded**
- 6.If the school is flooded, there will be no classes.**
- 7.You can build a house on the water**

