

Talking About My Hometown

- The past, present, and future of Anping

Team Name: **Blue Whale**

Team Member:

Team leader : Humi

Vice Captain : Kiki

Member : Lily, Lisa, Ella, Debby,
Rebeca, Aaron

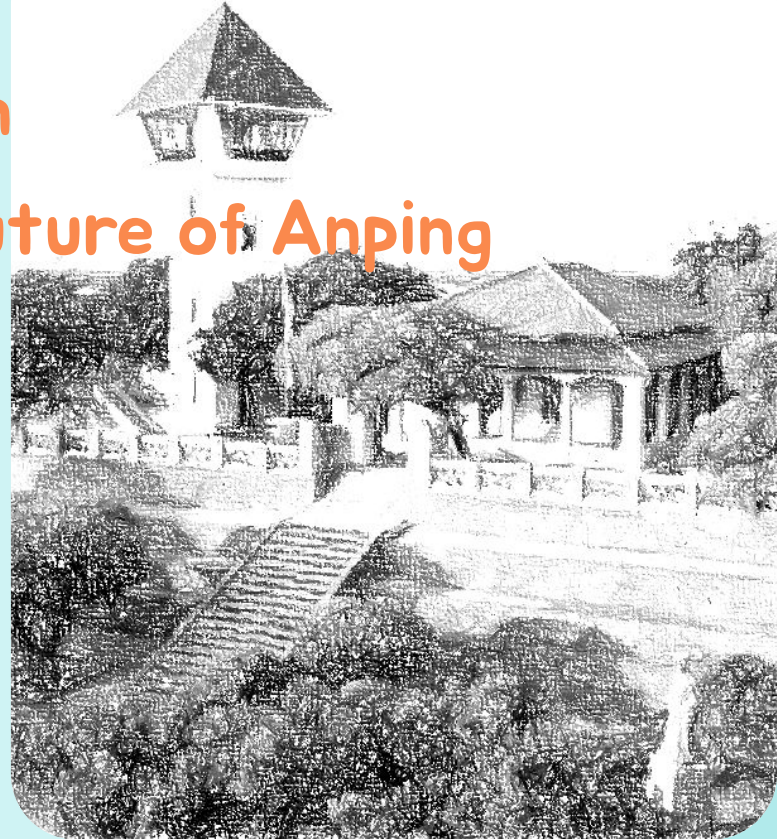




Table of contents

01

Foreword

my hometown

02

Formerly Anping

Speaking of four
hundred years of Anping



03

Today's Anping

The beauty and sorrow
of Anping

04

Anping in the future

Protect Our Motherland -
Beloved Anping

05

Epilogue

Anping Pingan

FOREWORD

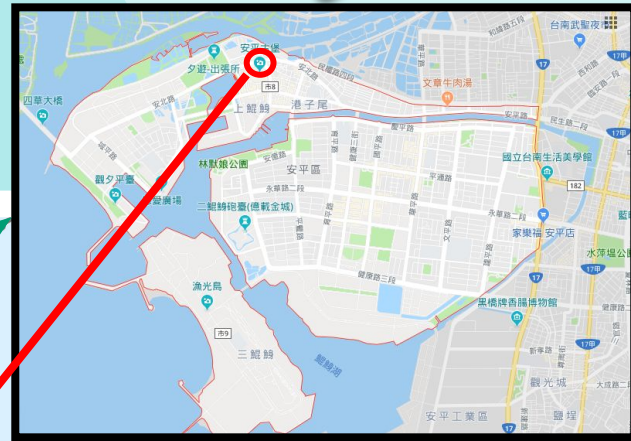


List

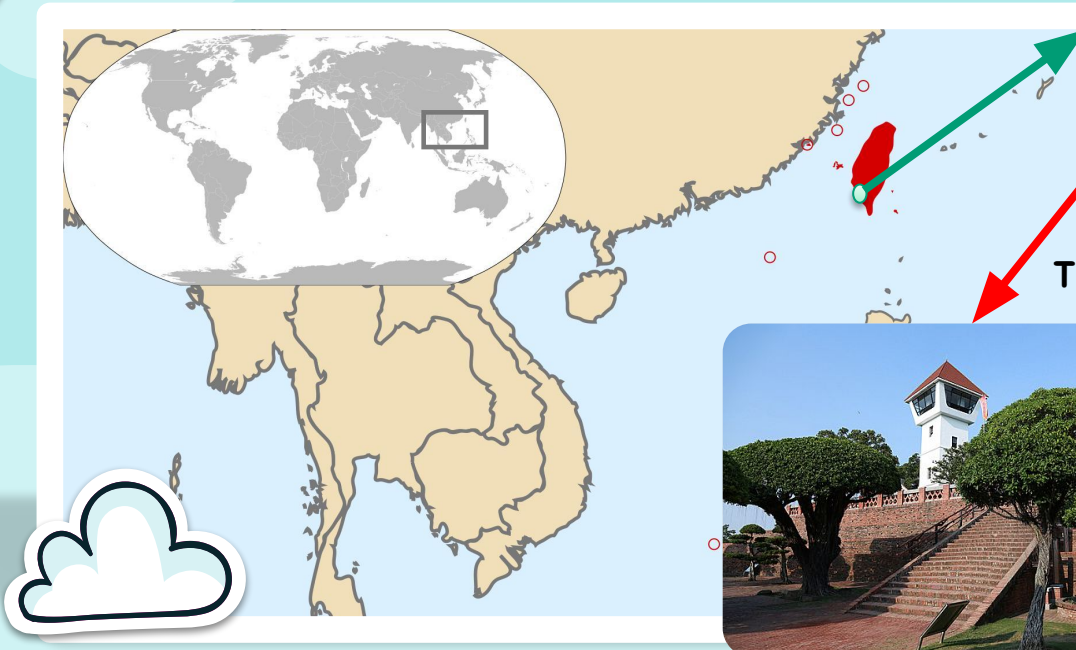
About my hometown

01

We live in Anping District, Tainan City of Taiwan, ROC.



This is our hometown, Anping in Tainan.



Anping Old Fort next to our school.



Simen Elementary School

2

3

4

5



Simen Experimental Elementary School

List

01

2

3

4

5



健康

關懷

自然

創新



Welcome to our website: <https://www.hmps.tn.edu.tw>

My hometown is located in Anping District, Tainan City, on the southwestern coast of Taiwan. The school is close to the seaside. It has suffered 5 major floods in history. In response to the issue of sea level rise caused by global warming, our team is thinking about how to use our modest strength to slow down or adapt to the living environment problems caused by climate change.



Formerly Anping

Speaking of four hundred years of Anping

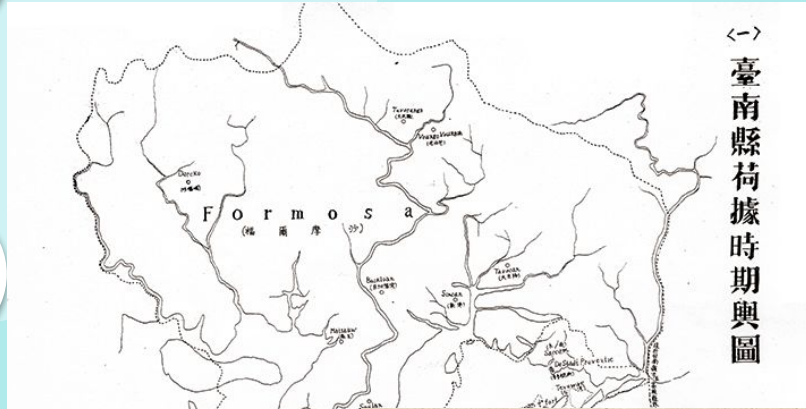


Witness the vicissitudes of the past four hundred years

- In the early 17th century, the Taijiang Inland Sea was once a passable vessel.
- In the 18th century, the sedimentation of the Taijiang inland sea accelerated, and in the 19th century it finally silted up into land.
- The 20th century was roughly shaped into what it is today

Anping in 1644

- The Taijiang Inland Sea was a large lagoon in southern Taiwan in the 17th century.
- Fort Zeelandia (now Anping) is located on a sandbar by the sea, with active business and sailing boats everywhere.



List

1

02

3

4

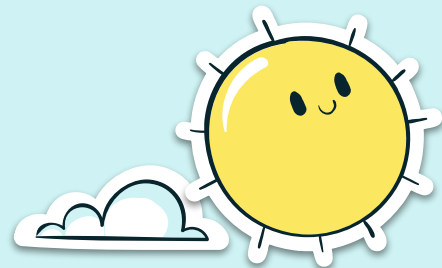
5

Formerly Anping

Speaking of four hundred years of Anping



Remains of Fort Zeelandia
near the school



The Taijiang Inland Sea is the starting point of Taiwan's development.

- First Fucheng, second Lukang and third Manka—Anping used to be the capital of Taiwan and the earliest place where Taiwan started to flourish.
- For four hundred years, the Taijiang Inland Sea has experienced becoming lagoons, silting, and even the formation of land.
- In recent years, the rise of sea level has accelerated, and Anping may be submerged again by seawater.

Today's Anping

Unlimited beauty in Anping.

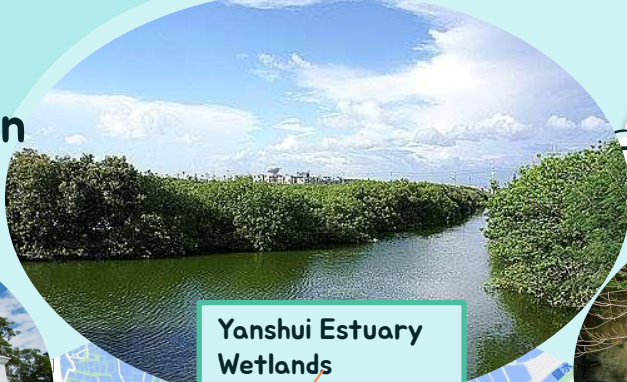
List

1



Tait & Co. Merchant House

2



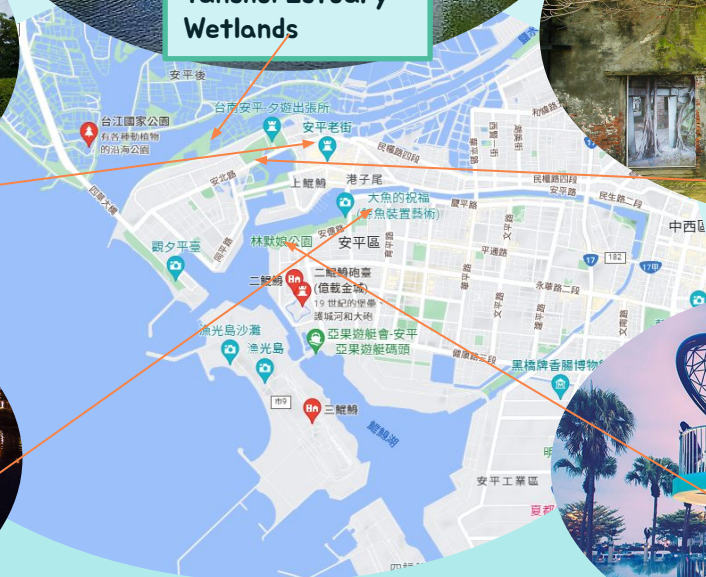
Yanshui Estuary Wetlands

03



Anping canal night view

4



My Hometown--Today's Anping Map

5



Anping Tree House



Blessing of the Big Fish

Today's Anping —Anping's hidden crisis



List

Greenpeace says ancient cultural city of Tainan will be hit hardest by rising sea levels

- Among the six capitals, Tainan City has the largest area affected by sea level rise. It is estimated that 426 square kilometers will be submerged under the sea by 2050. In addition to Anping Old Street, the historically valuable Anping Old Fort- Fort Zeelandia, and the Sicao Green Tunnel, known as "Taiwan's pocket version of the Amazon River", are all within the flooded area.

表2. 2050年不積極減碳情境下六都海平面上升與暴潮之衝擊分析

		人口 (萬人)	面積 (km ²)	淹沒建築面積 (坪)
臺北市	海平面上升	20.90	16.57	1,370,325
	海平面上升與暴潮	44.47	50.21	2,643,850
新北市	海平面上升	28.21	43.85	744,150
	海平面上升與暴潮	75.56	80.42	2,973,575
桃園市	海平面上升	0.81	17.46	9,075
	海平面上升與暴潮	2.23	33.30	175,450
臺中市	海平面上升	4.42	64.32	653,400
	海平面上升與暴潮	18.14	136.93	3,412,200
臺南市	海平面上升	17.28	310.98	399,300
	海平面上升與暴潮	33.72	426.65	4,322,725
高雄市	海平面上升	19.74	95.66	1,461,075
	海平面上升與暴潮	32.43	114.47	1,775,675

source: GREENPEACE綠色和平

1

2

03

4

5



Today's Anping

Climate change in Anping in recent years.



- 1 **The ancient capital has become a water capital! Tainan is flooded on a sunny day, experts worry: climate change.**
 - Climate change has flooded the Tainan Canal on sunny days. People in Tainan discovered on the morning of August 12, 2022 that the entire canal was flooding the sidewalk, and the water level was more than 20 centimeters high. The sea water by the fishing port directly flooded into the workhouse, but it was flooded even though it was not even half a drop of rain. Like a typhoon passing through...
- 2 **Anping is where we live, but the issues we are facing now...**
 - 3 **Simen Experimental Elementary School is located in the coastal area of Anping. It has experienced five floods in history, and the cultural relics of the school have been submerged by floods. How to cope with the rising sea level caused by global warming is an urgent issue we need to solve.**



Anping Canal flooded on sunny day



Simen Experimental Elementary School has experienced 5 floods

List

Anping in the future

Protect Our Motherland -
Beloved Anping

If you want a country to be prosperous and strong, you cannot ignore the ocean. Wealth comes from the sea, danger also comes from the sea.

—A quotation from Zheng He's Expedition

Anping stands near the sea. Four hundred years ago, it was the vast inland sea of Taijiang River. Now it is located at the mouth of the climate change. If the trend of global warming remains unchanged, it will return to the embrace of the sea in 2050. We shall resist change, or adapt to the environment to develop a sustainable life that coexists with the sea, which will test the wisdom of our future generations.



Anping in the future

List

Protect Our Motherland - Beloved

- Greenpeace predicts that by 2050, if the trend of climate change does not change, the coastal areas of Anping will be submerged under sea level again.
- We have to draw up a plan to live by the sea and live in harmony with the water. Therefore, the PBL topic of smart floating islands was developed. In the future, people will live on artificial floating islands.
- Transport means are needed between floating islands. How to develop green means of transport with low (zero) carbon and low (zero) pollution is our research topic.



1

2

3

04

5

List

Anping in the future

Green means of transport between floating islands

1

2

3

04

5



Anping in the future

List

Green means of transport between floating islands



Design purpose

- **Green transportation between floating islands belongs to offshore transportation.**
- **It must have amphibious transport function, which can solve both sea and land traffic at the same time.**
- **It must be designed with the concept of green energy, such as solar energy, wind power or hydrogen, etc., in response to the concept of environmental protection and loving the earth, and achieve the vision of zero carbon emissions.**



Solar amphibious whale car

1

2

3

04

5

Epilogue

Anping Pingan

List

1

2

3

4

05



Only if we understand can we care.

Only if we care will we help.

Only if we help shall all be saved.

— Jane Goodall

